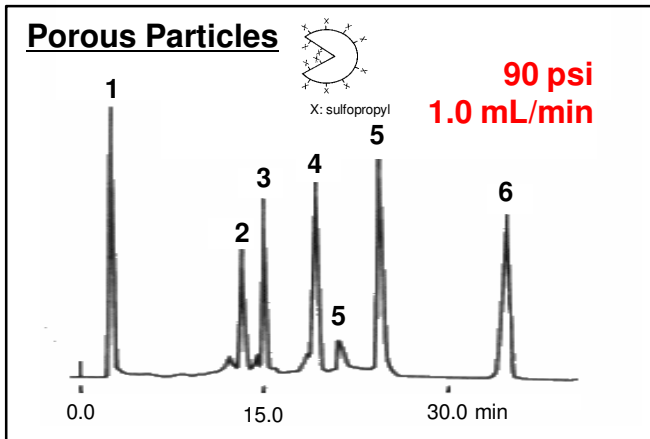


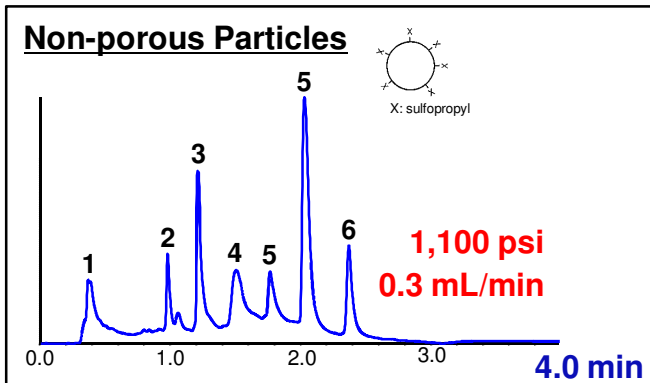
Ultra-Fast Strong Cation Exchange (Sulfopropyl) Shodex PIKESSE SP-2B HPLC Columns

30X faster analyses

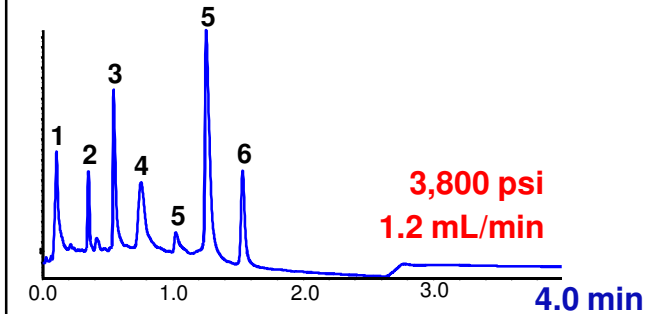
Compatible with HPLC & UHPLC Instruments



Column : **Shodex IEC SP-825**
(8.0 I.D. x 75 mm)
Eluent : (A), 20 mM sodium phosphate pH 7.0
(B), (A) + 0.5 M NaCl
Gradient : (A) to (B) linear, 0 to **60 min**
Detector : UV (280 nm)
Temp. : Room temp.
Injection vol. : 30 μ L
Injection amt. : 150 mg total protein / run

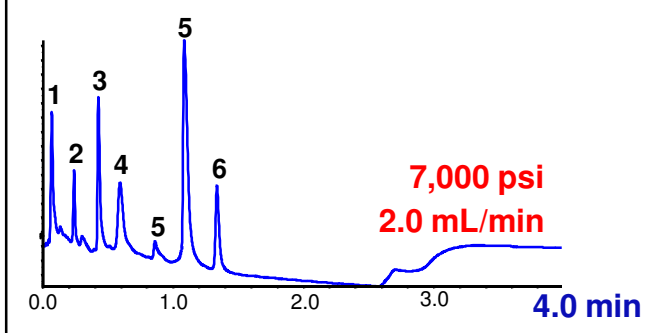


System : Waters Acquity UPLC®
Column : **Shodex PIKESSE SP-2B**
(2.0 I.D. x 50 mm)
Eluent : (A), 20 mM sodium phosphate pH 7.0
(B), (A) + 0.5 M NaCl
Detector : Waters TUV (280 nm)
Temp. : 25 °C
Injection vol. : 5 μ L
Injection amt. : 13 mg total protein / run



4-minute Gradient

Time (min)	% A	% B
Initial	100	0
2.5	50	50
2.6	100	0
4.0	100	0

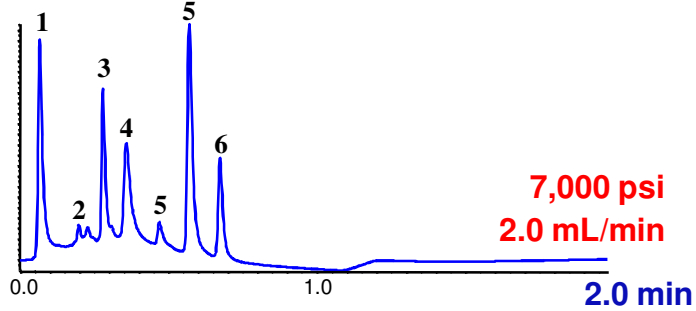
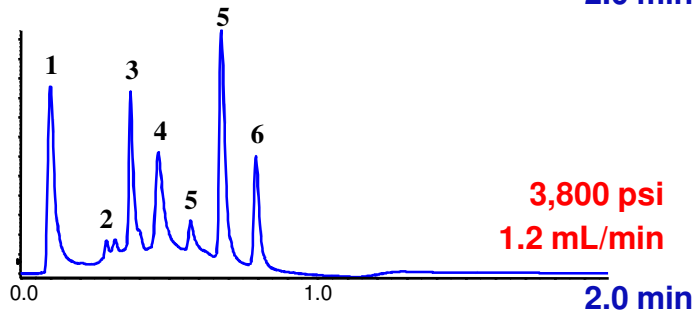
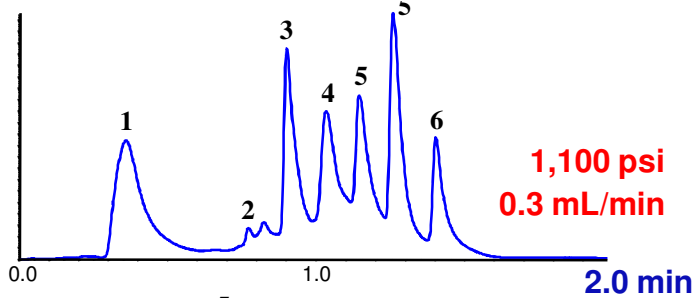


Protein Samples

1. Myoglobin
2. Trypsinogen
3. Ribonuclease A
4. α -Chymotrypsinogen A
5. Cytochrome c
6. Lysozyme



Non-porous Particles



System : Waters Acquity UPLC®
 Column : **Shodex PIKES SP-2B**
 (2.0 I.D. x 50 mm)
 Eluent : (A), 20 mM sodium phosphate pH 7.0
 (B), (A) + 0.5 M NaCl
 Detector : Waters TUV (280 nm)
 Temp. : 25 °C
 Injection vol. : 5 µL
 Injection amt. : 13 µg total protein / run

2-Minute Gradient

Time (min)	% A	% B
Initial	100	0
1.0	50	50
1.1	100	0
2.0	100	0

Protein Samples

1. Myoglobin
2. Trypsinogen
3. Ribonuclease A
4. α-Chymotrypsinogen A
5. Cytochrome c
6. Lysozyme

Conclusion

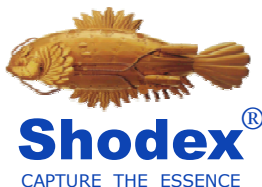
- PIKES SP-2B columns are fast – 30X faster than porous SP-825 columns
- Peak shape and resolution improved as flow rate & pressure increased
- Non-porous columns are compatible with HPLC and UHPLC instruments (> 7,000 psi)
- Porous columns have higher sample loading capacity (for SP-825, > 250 µg / injection)
- Both porous & solid-sphere columns show high recovery rates & low protein adsorption

Column Specifications

Products		Particle (µm)	Ion Exchange Capacity (meq/g)	I.D. x L* (mm)
F6113110	PIKES SP-2B	2.5	0.3	2.0 x 50
F6118250	SP-825	8	0.4	8.0 x 75

Base material: Polyhydroxymethacrylate
 Functional group: Sulfopropyl
 (Anion-exchange DEAE available)
 *Custom dimensions available

For price quotes and technical information, please contact Shodex or our distributors near you:



Showa Denko America, Inc.

420 Lexington Ave, Suite 2850
 New York, NY 10170

Phone : 212.370.0033
 Fax : 212.370.4566
 General : www.shodex.com
 America : www.shodex.net
 Support : support@shodex.net